



Prophetic Glory LAST DAYS conference

INTERNATIONAL VISITORS KIT

CONFERENCE SCHEDULE

ENTRY TO THAILAND

ACCOMMODATION

GETTING TO VENUE

FOOD & BEVERAGE

CORRESPONDENCE

CONFERENCE SCHEDULE

MAIN SESSION

Date

13 – 14 October 2022

Time

9.30am – 9.30pm

Venue

BITEC Bangna, Grand Hall GH 201 & 202

Address

88 Debaratna Road, Bangna, Bangkok 10260

88 ถ. เทพรัตน์ แขวง บางนา เขตบางนา กรุงเทพมหานคร
10260

Google map link

<https://goo.gl/maps/8jrl7wsXftcgeRf87>

SPECIAL BRIEFING

Date

15 October 2022

Time

9.30am – 6pm

Venue

Living Streams Church @ KPN tower

Address

719 Rama IX Rd, Bang Kapi, Huai Khwang, Bangkok 10310

719 ถนน พระราม 9 แขวง บางกะปิ เขตห้วยขวาง
กรุงเทพมหานคร 10310

Google map link

<https://goo.gl/maps/UCy6TSpXjljfrFu2A>

ENTRY TO THAILAND

FLIGHTS

Thailand is well connected to the rest of the world. Most airlines fly into Bangkok. Thai Airways is the national carrier of Thailand.

The nearest airports are Suvarnabhumi International Airport (14 km by car to venue) and Don Mueang International Airport (39 km by car to venue).

ENTRY REQUIREMENTS

Thailand is open to the world and welcomes all international visitors. From July 1st, international travellers do not need to show proof of vaccination or Covid-19 insurance, and quarantine is no longer needed. Thailand Pass is also no longer in use.

Please check the link below for further details regarding Covid-19 testing requirements and visa matters.
<https://www.thaiembassy.com/travel-to-thailand/how-to-travel-to-thailand-in-2022>

Do check with the Royal Thai Embassy in your respective countries if further clarification is required.
<https://www.thaiembassy.org/>

ENTRY TO THAILAND

TRANSPORT TO HOTEL

Airport transfer

Book a private vehicle to take you to and from your hotel. Available on travel booking sites such as Agoda, booking.com, trip.com etc.

Hotel shuttle

Check with your hotel if they provide a shuttle service from the airport

Public transport

The Airport Rail Link (ARL) connects Suvarnabhumi Airport to the MRT Subway blue line (via Makkasan – Phetchaburi station), and the BTS Skytrain Sukhumvit line (via Phaya Thai station). Please check this link for more details <https://www.bangkokairportonline.com/bangkok-airport-rail-link/>

From Don Mueang Airport you can transfer to Bangkok Railway Station in the city centre, and take the MRT Subway blue line from Hua Lamphong station.

TOURIST SIM CARD

Tourist SIM cards are readily available. You can find booths of the three major telecoms providers located at various locations such as the baggage claim area, arrival terminal or convenient stores such as 7-11.



ACCOMMODATION

HOTEL RECOMMENDATIONS

We offer a list of hotels available at special rates for conference attendees. Please contact the hotel directly.

View full list of hotels here
<https://bit.ly/Bitec-hotel-list>



FEATURED HOTELS

CROSS VIBE BANGKOK SUKHUMVIT HOTEL



Distance to BITEC

6.0 km

Room type

Superior room (38 sqm)

Website

<https://bit.ly/Crossvibe>

Reservation

ssm.suk@crossvibe.com



THE LANDMARK BANGKOK



Distance to BITEC

12.0 km

Room type

Premium room (30 sqm)

Website

www.landmarkbangkok.com

Reservation

reserve@landmarkbangkok.com



FEATURED HOTELS

CENTREPOINT HOTEL SUKHUMVIT 10



Distance to BITEC

12.0 km

Room type

Deluxe room (38 sqm)

Website

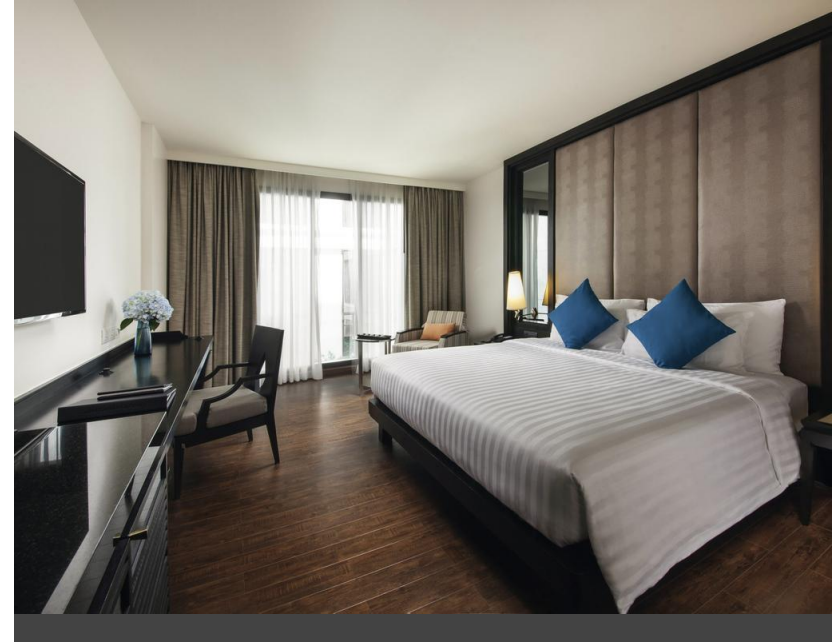
www.centrepointhotel.com/sukhumvit-10

Reservation

rsvn_sukhumvit10@centrepointhotel.com



MOVENPICK HOTEL SUKHUMVIT 15 BANGKOK



Distance to BITEC

12.1 km

Room type

Superior room (30 sqm)

Website

<https://bit.ly/MovenpickSukhumvit15>

Reservation

hotel.sukhumvit15.reservations@movenpick.com



FEATURED HOTELS

THOMSON HOTELS & RESIDENCES BANGNA



Distance to BITEC

1.5 km

Room type

Standard room (23 sqm)

Website

www.thomsonbangkok.com/bangna

Reservation

rsv.b@thomsonbangkok.com

fom.b@thomsonbangkok.com



LASALLE SUITES & SPA HOTEL



Distance to BITEC

2.0 km

Room type

Deluxe suite 1 br pool view (55 sqm)

Website

<https://lasallesuitesandspa.com>

Reservation

lasallesuites19@gmail.com



* All room images are for reference only and are subject to availability

FEATURED HOTELS

AVANA GRAND HOTEL



Distance to BITEC

2.6 km

Website

<https://bkk.avanahotel.com/th>

Reservation

avana2004@hotmail.com



* Special deal from 990 baht/night to 790 baht (minimum 2 nights, no breakfast)
when you mention Living Streams during reservation

* All room images are for reference only and are subject to availability

GETTING TO VENUE

TO BITEC

Public taxi

Street hail metered taxis. They mostly accept cash only.

Ride hailing

Grab and Bolt offer private car/taxi services with cash or card payment services



BTS Skytrain

Take the BTS Skytrain to Bang Na station (E13 Sukhumvit line) and use the skywalk leading directly to BITEC

Hotel shuttle service

Check with your hotel if they offer a shuttle service to BITEC

Drop off point

Alight at the ground floor, near the Red Box Visitor Center/Business Center. Take the escalator up to the second floor Grand Hall 201 & 202.



* Transport arrangements to KPN tower will be announced in due course

F&B OPTIONS

View F&B options at the venue here

<https://www.bitec.co.th/visitor/food-and-drink>

* Information might not be the most updated

Food delivery

GrabFood, LINEMAN, foodpanda and Robinhood are some of the popular food delivery platforms available here in Bangkok



CORRESPONDENCE

For enquiries, contact us at conference@tod.sg